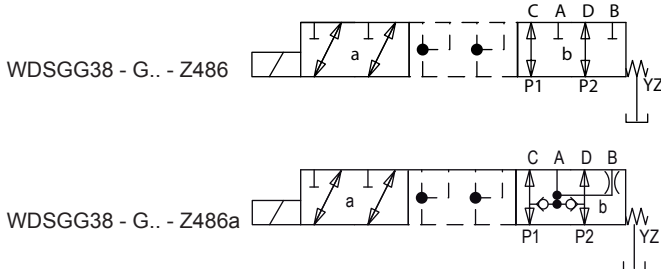
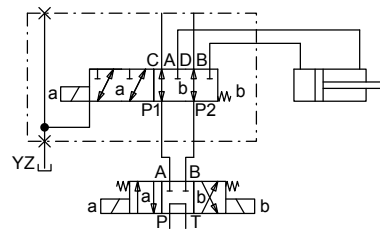
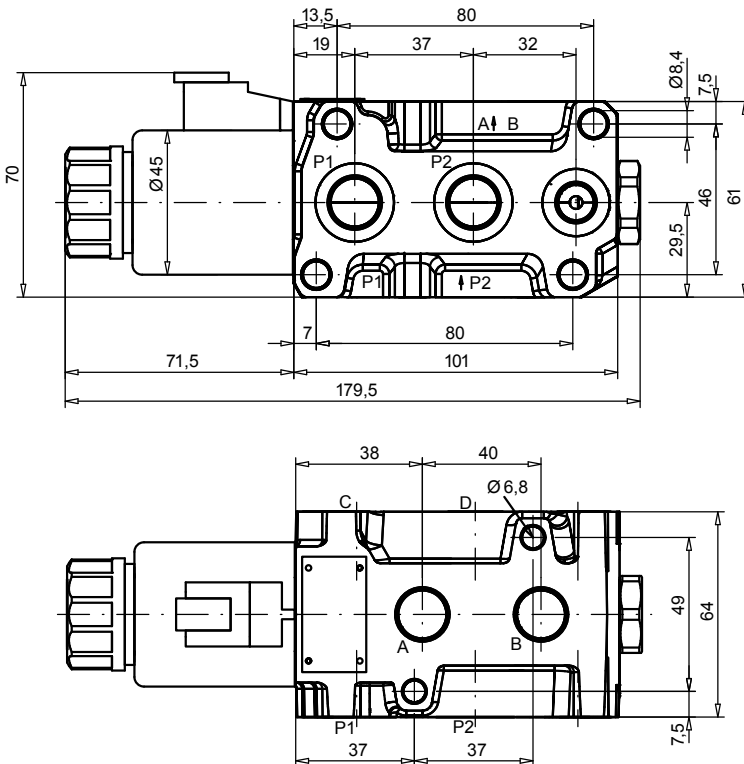
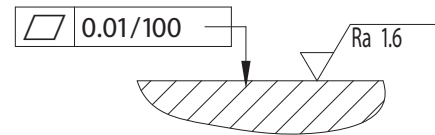


**Solenoid operated spool valve**

- 6/2-way spring offset
- $Q_{max} = 50 \text{ l/min}$
- $p_{max} = 315 \text{ bar}$

**NG6**
**TYPE CODE**

**SYMBOL**


Direction control valve for the alternative driving of two consumers. During the switching process the volume flow from the pump has to be interrupted by a valve connected in series. Option: Soft switching, manual emergency actuation, Viton seals.

**DIMENSIONS**

**Mounting surface**

**Fastening torque:**

M6 (Quality 8.8)	$M_D = 9,5 \text{ Nm}$
M8 (Quality 8.8)	$M_D = 20 \text{ Nm}$
Knurled nut	$M_D = 7 \text{ Nm}$

**GENERAL SPECIFICATIONS**

Description	6/2-way spool valve
Construction	Direct operated
Type of actuation	electric
Mounting	Either with two socket head cap screw M6x7 or four socket head cap screw M8x70 Interlinking with anchor bolts M8
Connections	Screw connections P1, P2, C, D: G 3/8" YZ: G 1/4"
Seals	NBR
Ambient temperature	-20... +50 °C
Mounting position	any, preferably horizontal
Weight	2,25 kg

**HYDRAULIC SPECIFICATIONS**

Fluid	Mineral oil, other fluid on request
Contamination efficiency	ISO 4406:1999, classe 20/18/14 (Required filtration grade $\beta_{10...16} \geq 75$ ) refer to data sheet 1.0-50/2
Viscosity range	12 mm <sup>2</sup> /s...320 mm <sup>2</sup> /s
Fluid temperature	-20... +70 °C
Working pressure with YZ	315 bar
Working pressure without YZ	250 bar
Max. volume flow	50 l/Min.

**ELECTRICAL OPERATIONS**

Design	solenoid wet pin push type
Nominal voltage	$U_N = 12 \text{ VDC}$ $U_N = 24 \text{ VDC}$
Voltage tolerance	$\pm 10\%$ of nominal voltage
Protection class	IP69 with Deutsch connector DT04-2P IP67 with connector to ISO 4400/DIN43650
Relative duty factor	100% ED (refer to data sheet 1.1-173)
Operating life (number of switching cycles)	$10^7$ (Number of switching cycles, theoretical)

For further electrical specifications see data sheet 1.1.182 E

**PRESSURE DROP VOLUME FLOW CHARACTERISTICS**

